

Fig. 1. § 363. 394. Coupe des Aravis aux Etroits près S^t Jean de Sixt. $\frac{1}{50,000}$

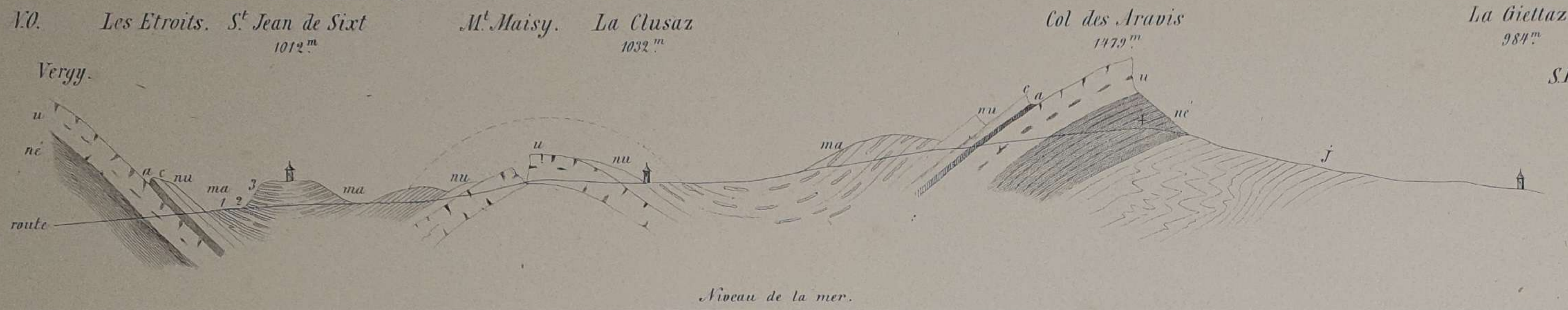


Fig. 2. § 366. Ravin du Col de Teine.

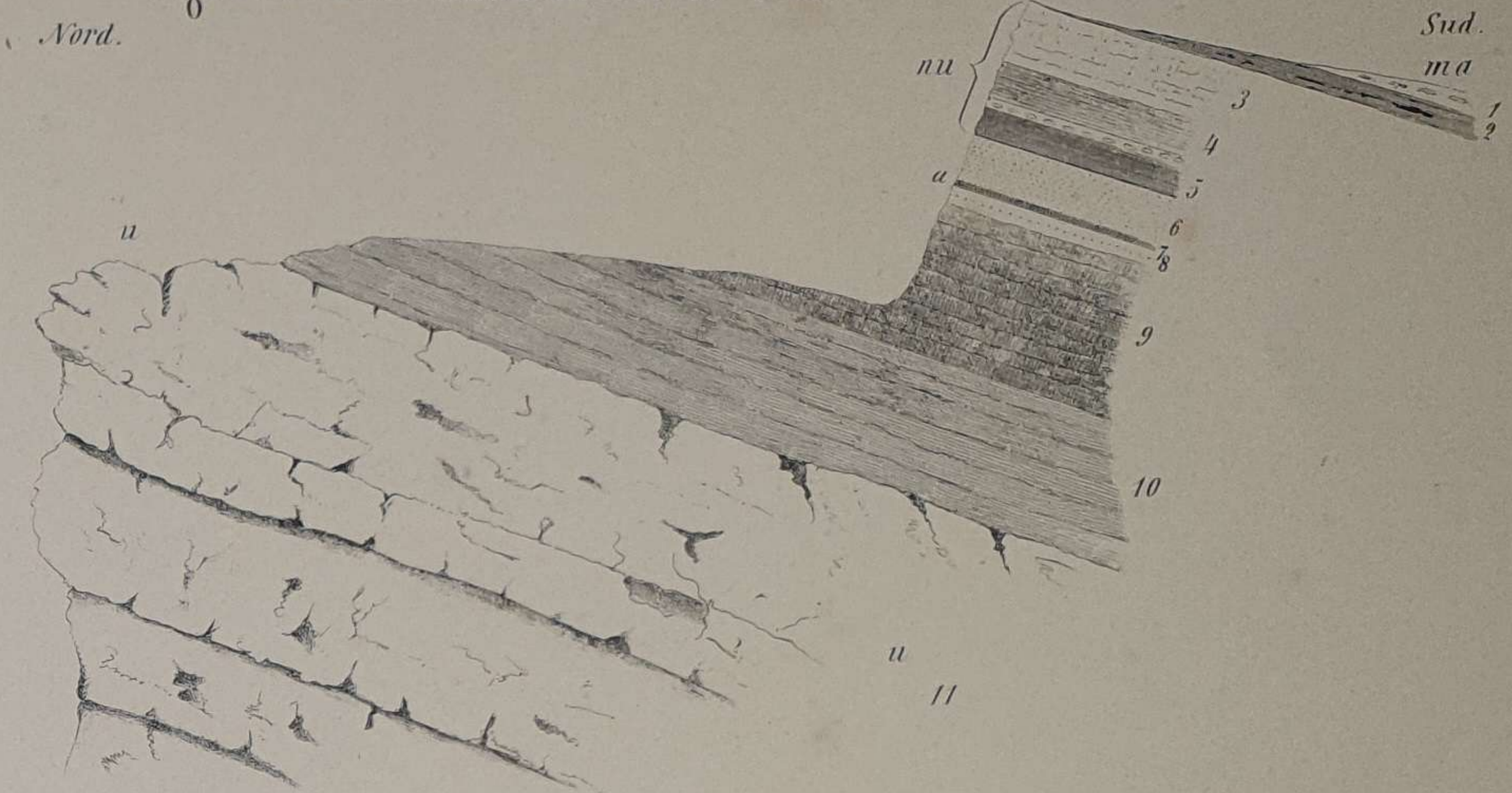


Fig. 3. § 374. Balme de Thuy.

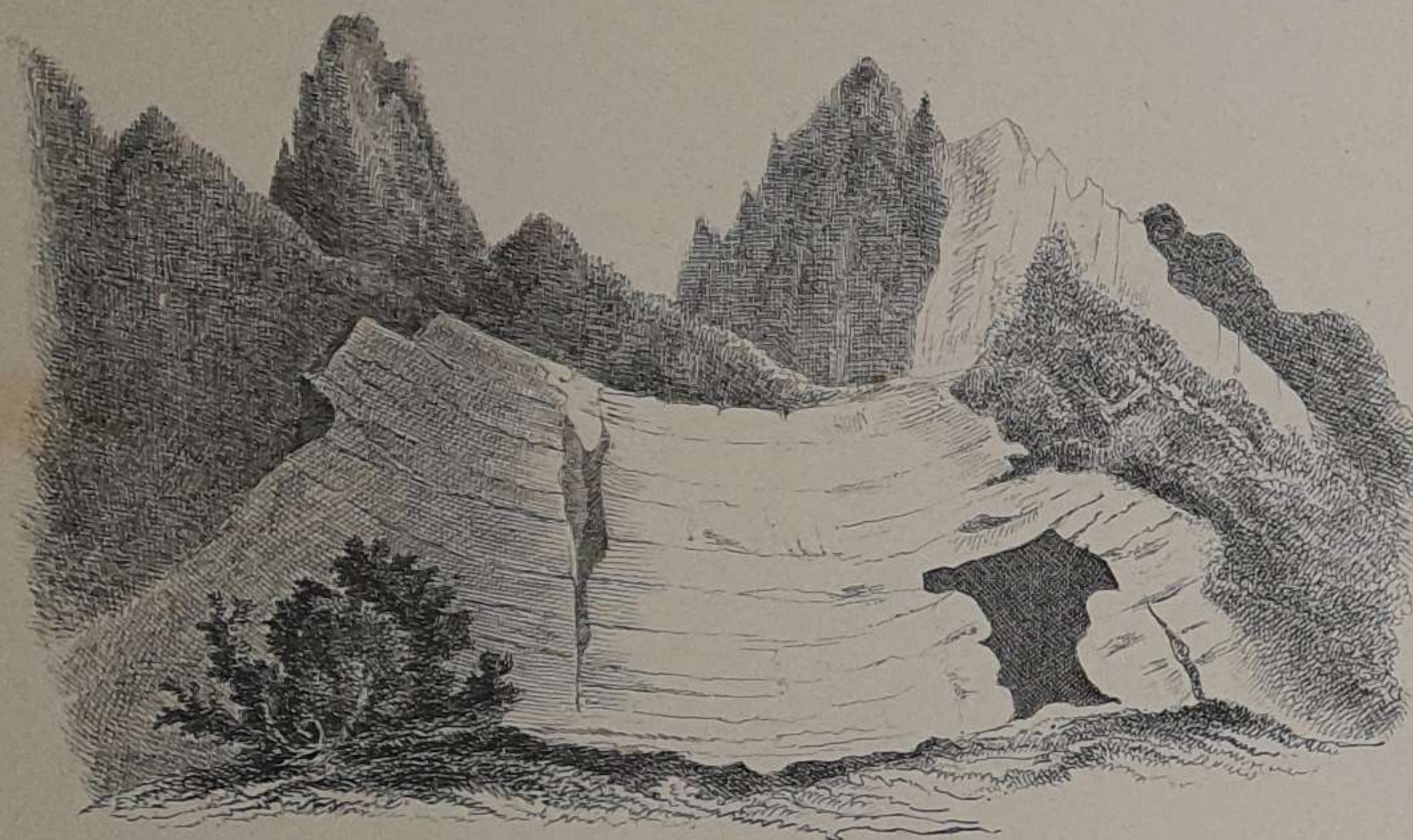


Fig. 4. § 377. Coupe prise entre le village et la mine de Montmin.

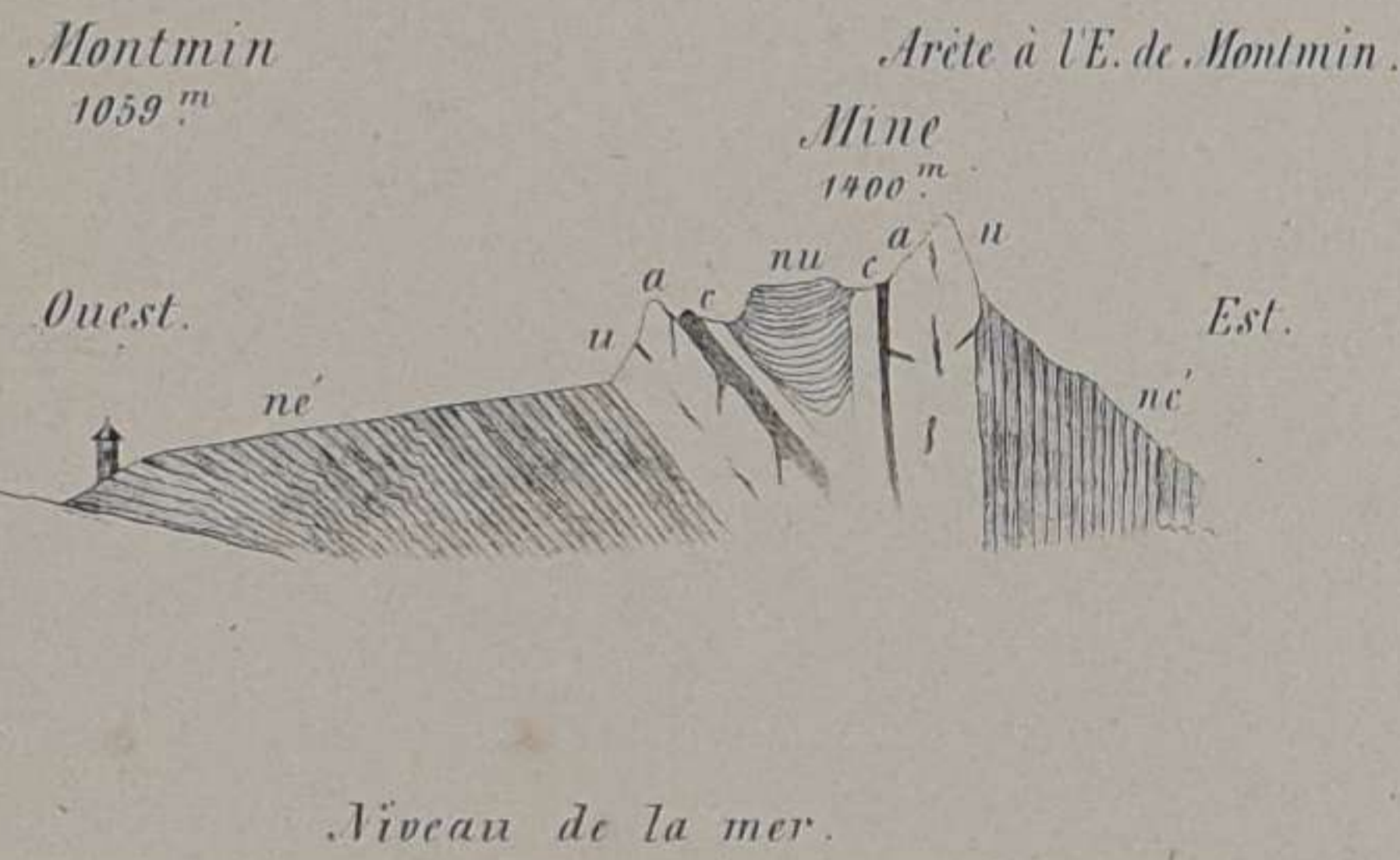


Fig. 5. § 374. Pli du fond de la vallée de Champ-laitier ou de la vallée de Thorens.

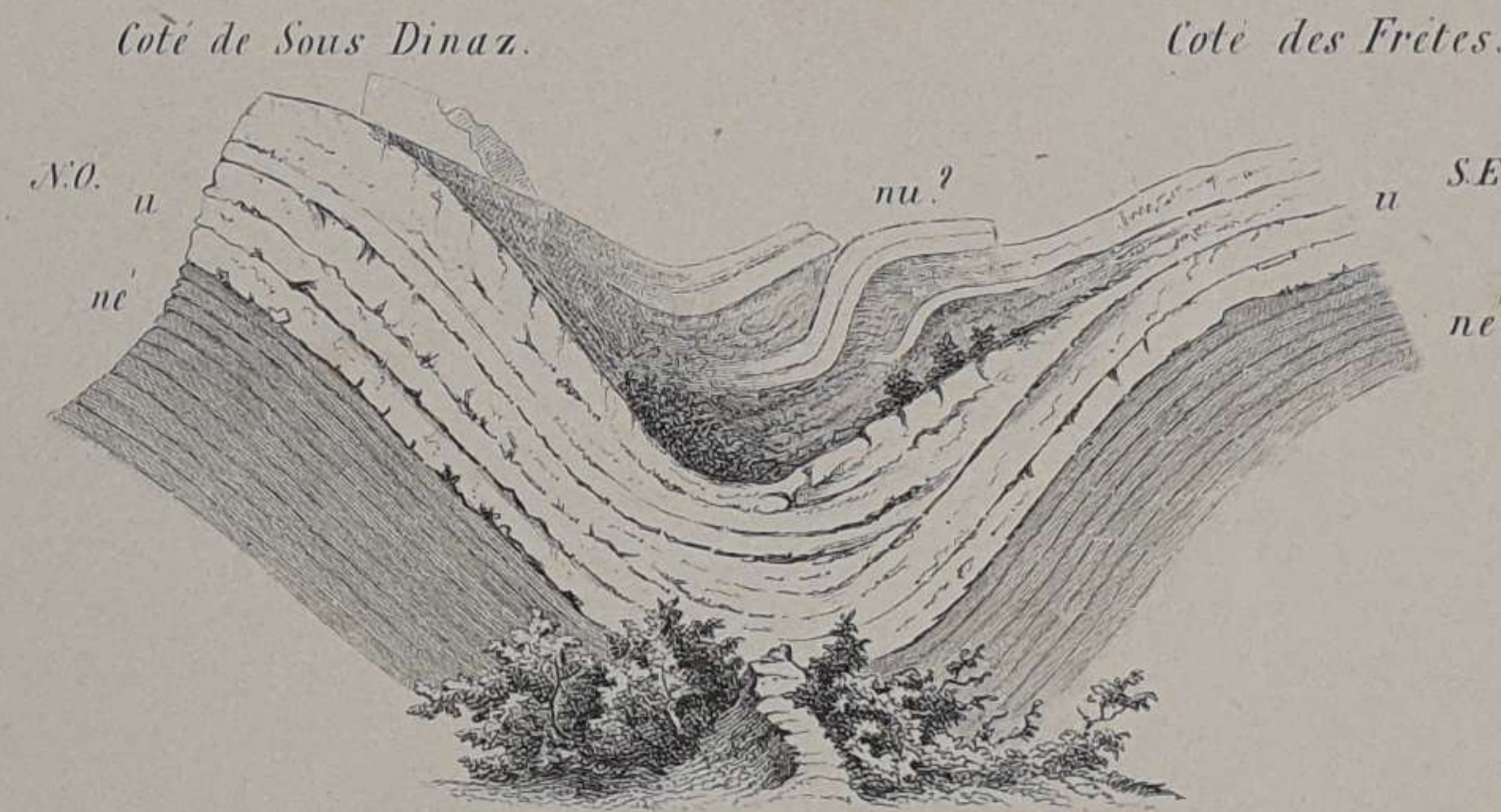


Fig. 6. § 364. Mine de Charbon du Petit Bornand.

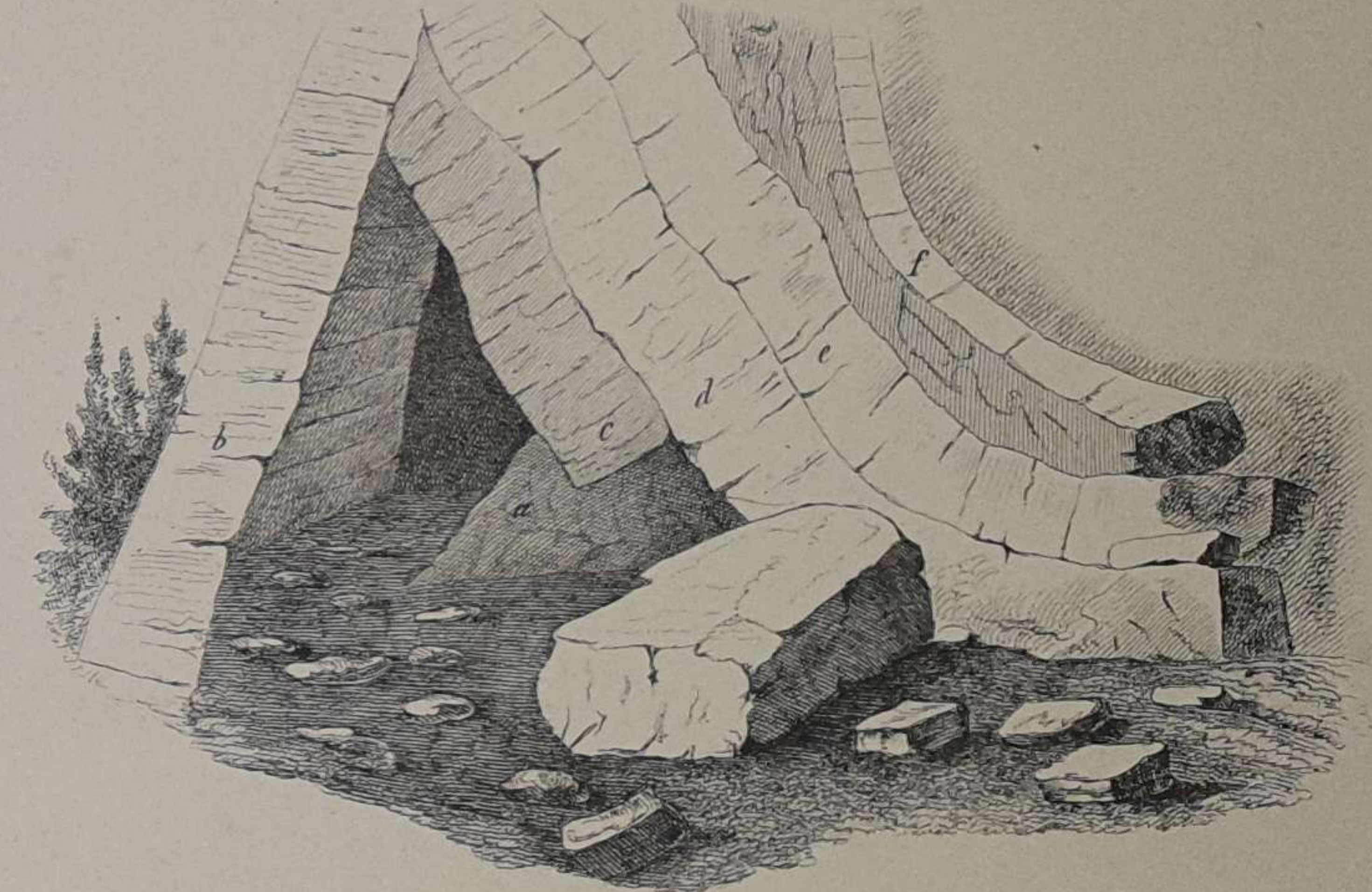


Fig. 7. § 374. Calvaire de Thônes d'après M^r Murchison (1848).

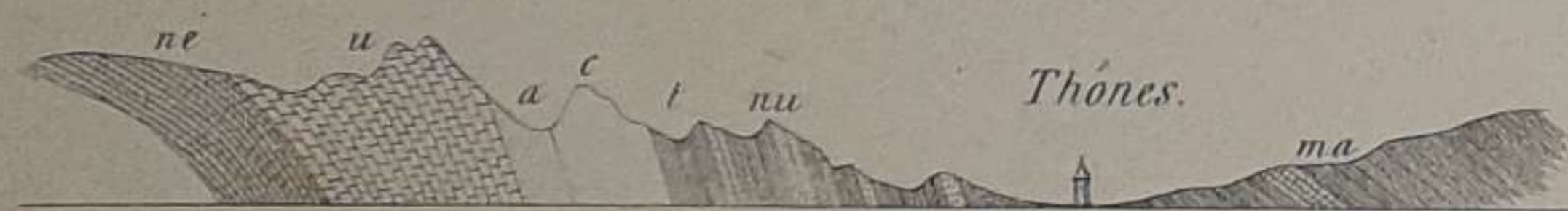
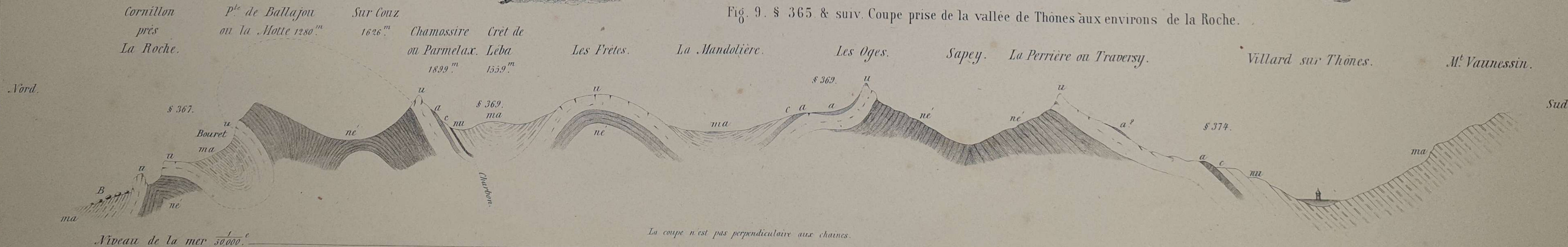


Fig. 8. § 375. Sommet de la Tournette.



Fig. 9. § 365 & suiv. Coupe prise de la vallée de Thônes aux environs de la Roche.



Dess. Pilet & Lorymas, Genève.